



PICKING UP WHERE OTHERS LEAVE OFF



# LITHIUM END CONTROL RIDER PALLET JACK RPT22L

**CAPACITY** 4,400 lbs.

**INTEGRATED 205AH  
LITHIUM BATTERY** 120vac  
Charger

## BATTERY/CHARGER

Integrated 24V 205AH Li-ion battery and 120VAC onboard plugin charger. Optional 240VAC external charger available for greatly reduced charging times.

## DRIVE AND TRAVEL CONTROLS

24-volt AC ZAPI Travel Controller

Variable speed from 0 mph to 5.0 mph empty  
Variable speed from 0 mph to 4.5 mph loaded

## TIRES/WHEELS

### DRIVE

(1) 9" x 2.95" polyurethane

### STABILITY CASTERS

(2) 5.12" x 2.16" polyurethane

### LOAD

(4) 2.91" x 2.56" polyurethane

## CONTROL HEAD

The RPT22L end control rider pallet jack is very compact while featuring electronic power steering. Its large standard operator's platform with microcellular rubber floor mat offers enhanced ride comfort and productivity. The position of the control head and grab bar supports good ergonomics for most operators with easy to use controls provided for travel, lift, lower and horn functions. Dual butterfly thumb controls for forward and reverse travel supports driver stances on the left or right side of the vehicle.

## FORKS

Low profile forks with collapsed height under 3" and pallet entry rollers for easy pallet entry and exit. Split dual load wheels disperse heat while maintaining solid life expectancy. Easily accessed grease zerks are provided on pivot points for ease of maintenance and to ensure long equipment service life. Heavy duty adjustable pull rods.

## HYDRAULICS

Heavy duty pump motor hydraulic reservoir, solenoid, and gear pump with center mounted lift cylinder. Integral pressure compensated flow control valve regulates lowering speeds.

## ELECTRICAL

Heavy-duty, 24-Volt AC system for demanding warehouse applications. The programmable ZAPI traction controller and matching drive motor provide high performance throughout the entire speed and torque range. Emergency power disconnect, hour meter, battery discharge indicator, key switch and belly button reversing switch are provided as standard equipment. The integrated lithium battery and battery management system communicate through the vehicle's CAN system to deliver optimal performance during operation, opportunity charging or full cycle charging operations.

## DRIVE UNIT

Vertically mounted drive motor is directly mounted to gear housing. Oil bathed bevel gear drive train with tapered roller bearings transfers power to axle. State of the art optimized gear technology supplies advantages such as zero maintenance, low noise level, high efficiency and high performance. Electromagnetic brake is mounted on motor armature shaft multiplying the braking power through the transmission. Brake is applied when control arm is in the vertical or lowered horizontal handle position. System features anti-roll back & neutral braking.

### CASTER SYSTEM

Heavy duty spring loaded articulating system designed to maintain good truck performance and operator confidence during use.

### ACCESSIBILITY

Heavy duty composite single piece cover exposes major components for inspection and maintenance.

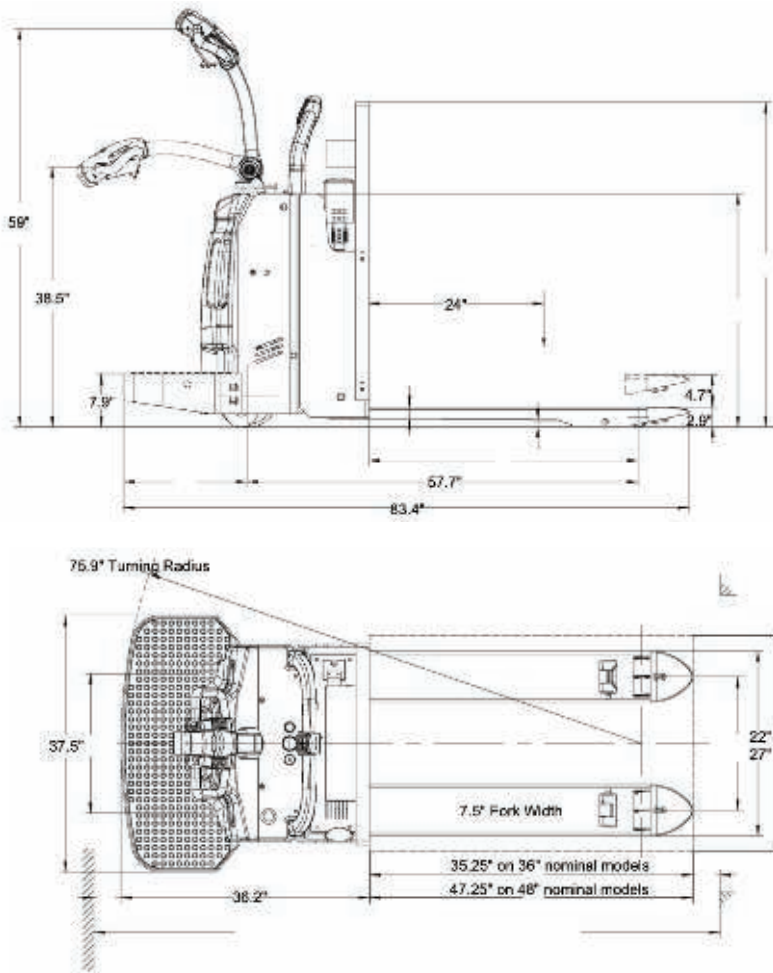
### OPTIONAL FEATURES

- External 240VAC single phase 60amp charger
- 48" or 60" high load backrest
- Traction drive tire

## DIMENSIONS

# LITHIUM END CONTROL RIDER PALLET JACK

RPT22L



### GRADEABILITY

Without Load **16%**  
With Load **6%**

### TRAVEL POWER HEAD FIRST VARIABLE

Empty **0 to 5 mph**  
Loaded **0 to 4.5 mph**

### TRAVEL FORKS FIRST VARIABLE

Empty **0 to 5 mph**  
Loaded **0 to 4.5 mph**

Lowered Fork Height **2.9"**  
Maximum Fork Height **4.7"**  
Extended Fork Height **7.6"**  
Platform Step Height **7.9"**

5 YEAR  
10,000 HOUR

**LITHIUM BATTERY**  
WARRANTY

MODEL#	FORKS	CAPACITY	ACTUAL FORK WIDTH	ACTUAL FORK LENGTH	OVERALL WIDTH	OVERALL LENGTH	*WEIGHT
RPT22L	27 x 48	4400 lbs.	27	47.25	37.5	84	1450 lbs.

\*Estimated shipping weight with battery and charger